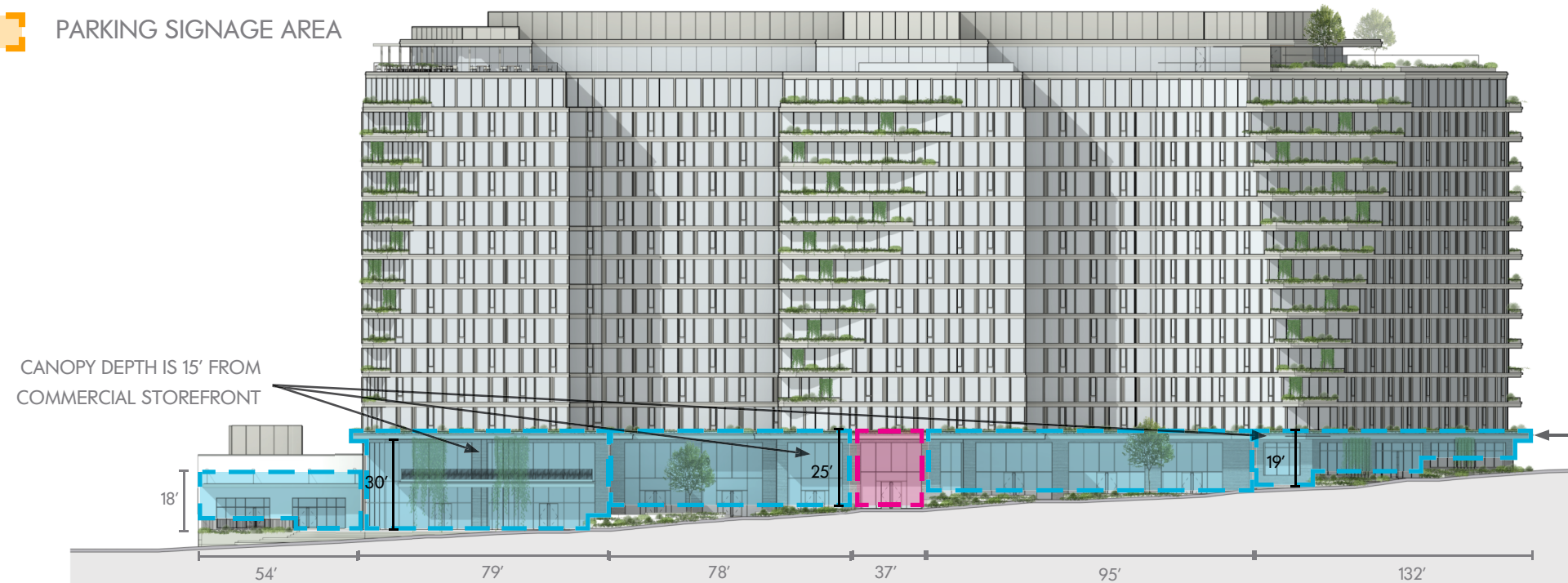
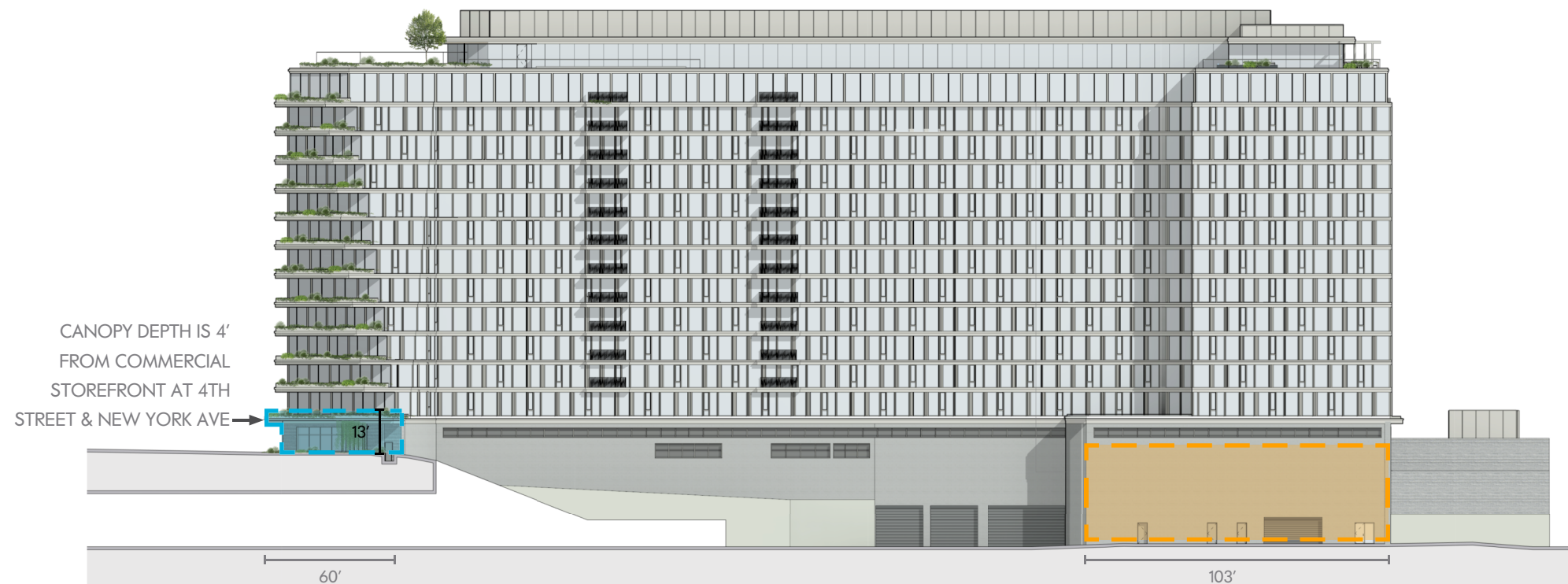
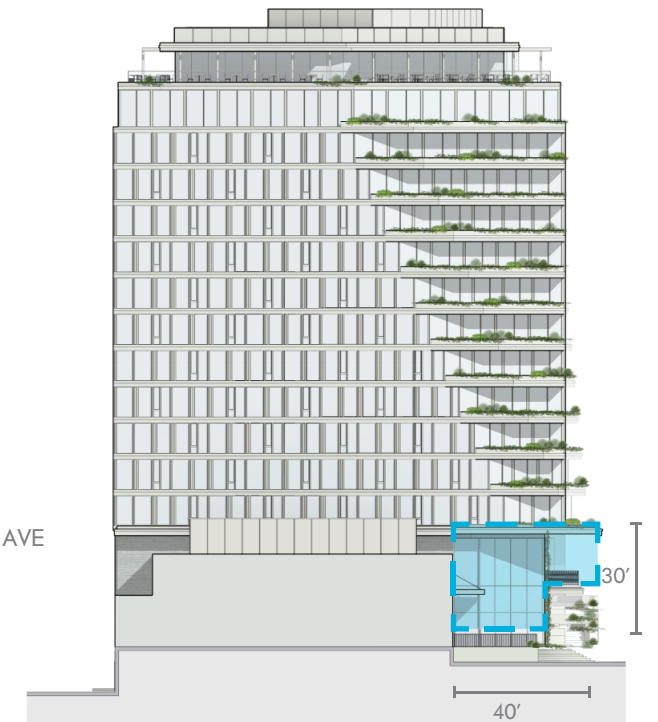


- RESIDENTIAL SIGNAGE AREA
- RETAIL SIGNAGE AREA
- PARKING SIGNAGE AREA



CANOPY DEPTH IS 4' FROM COMMERCIAL STOREFRONT AT 4TH STREET & NEW YORK AVE



1348 4TH STREET NE

*CONTENT ON PAGE EDITED OR ADDED

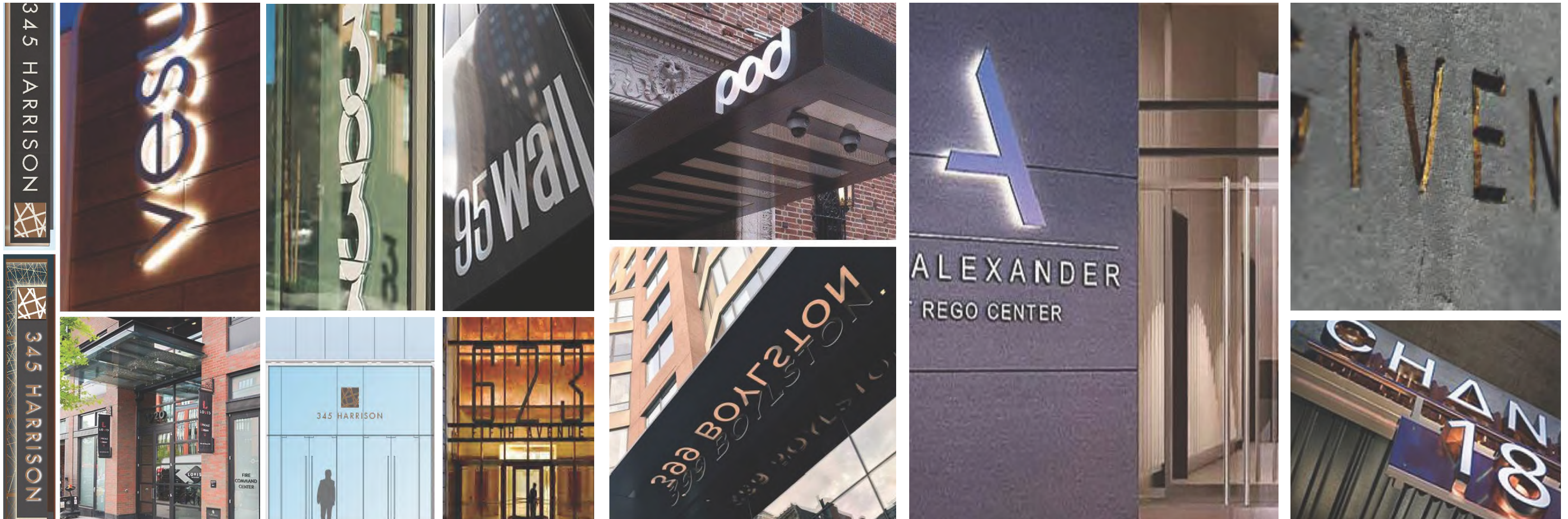
SIGNAGE DIAGRAM
CONSOLIDATED PUD APPLICATION
 ZONING COMMISSION
 District of Columbia
 CASE NO. 19-29
 December 2021
 EXHIBIT NO. 34F6



RETAIL SIGNAGE

NOTE: FLEXIBILITY IS REQUESTED TO VARY THE EXTERIOR DESIGN AND MATERIALS OF THE GROUND-FLOOR RETAIL SPACES BASED ON THE PREFERENCE OF THE INDIVIDUAL TENANT, PROVIDED THAT THE RETAILER DOES NOT MODIFY THE BUILDING FOOTPRINT OR REDUCE THE QUALITY OF THE MATERIALS USED ON THE EXTERIOR OF THE GROUND FLOOR OF THE PROJECT. ALL SIGNS TO COMPLY WITH THE DC MUNICIPAL REGULATIONS TITLE 12, SECTIONS 3107 AND N101.

1348 4TH STREET NE



RESIDENTIAL SIGNAGE

NOTE: FLEXIBILITY IS REQUESTED TO VARY THE EXTERIOR DESIGN AND MATERIALS OF THE GROUND-FLOOR RETAIL SPACES BASED ON THE PREFERENCE OF THE INDIVIDUAL TENANT, PROVIDED THAT THE RETAILER DOES NOT MODIFY THE BUILDING FOOTPRINT OR REDUCE THE QUALITY OF THE MATERIALS USED ON THE EXTERIOR OF THE GROUND FLOOR OF THE PROJECT. ALL SIGNS TO COMPLY WITH THE DC MUNICIPAL REGULATIONS TITLE 12, SECTIONS 3107 AND N101.



PARKING SIGNAGE

NOTE: FLEXIBILITY IS REQUESTED TO VARY THE EXTERIOR DESIGN AND MATERIALS OF THE GROUND-FLOOR RETAIL SPACES BASED ON THE PREFERENCE OF THE INDIVIDUAL TENANT, PROVIDED THAT THE RETAILER DOES NOT MODIFY THE BUILDING FOOTPRINT OR REDUCE THE QUALITY OF THE MATERIALS USED ON THE EXTERIOR OF THE GROUND FLOOR OF THE PROJECT. ALL SIGNS TO COMPLY WITH THE DC MUNICIPAL REGULATIONS TITLE 12, SECTIONS 3107 AND N101.

1348 4TH STREET NE